



Martin  
Concrete  
Construction

# LESSONS LEARNED

|                      |                       |
|----------------------|-----------------------|
| <b>COMPLETED BY:</b> | <b>DATE PREPARED:</b> |
| Katie Hendricks      | 6/22/22               |
| <b>PROJECT NAME:</b> | <b>SUBJECT:</b>       |
| Project Rebound      | Continuous Dock Pit   |

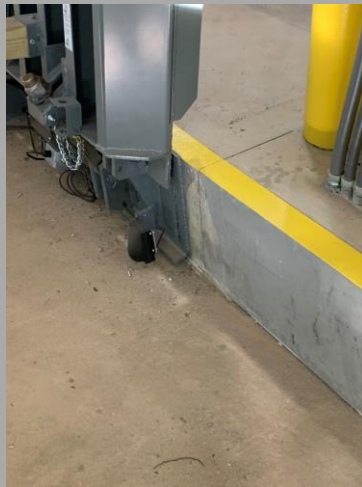
## SITUATION:

Continuous dock pit channel is welded on the leveler. Once the dock pit angles were welded to the leveler, the welder noticed voids/hollow sounds in the concrete. The blame was placed on Martin. Martin was instructed to repair the voids. Upon investigation by the field, it was observed that the heat of the welding created expansion and hollow spots/voids and concluded that it was not a Martin issue.

## LESSON LEARNED AND/OR CORRECTIVE ACTION & PICTURES:

Projects that have continuous dock pit levelers need to document the quality of the concrete prior to the welder installing the continuous channel at the dock positions.

This needs to be addressed in the DWP meeting to discuss with GC.



Martin Concrete Construction, Inc.  
[www.martinconcrete.com](http://www.martinconcrete.com)

4040 Royal Drive Suite 800  
Kennesaw, GA 30144  
(770) 795-0406

1010 Pleasant Grove Place Suite 200  
Mount Juliet, TN 37122  
(615) 288-2640